



# Best-in-Class Data

Proactive solution. Real-time visibility.



## Best-in-Class Data

The usage of supplier Big Data in companies i.e. procurement departments and business functions offers huge potential to realise savings and improve performance by leveraging internal and external supplier information for sourcing, delivery and to meet the increasing need for detailed supplier information in regards to e.g. risk, regulatory compliance, environmental, social and corporate governance requirements.

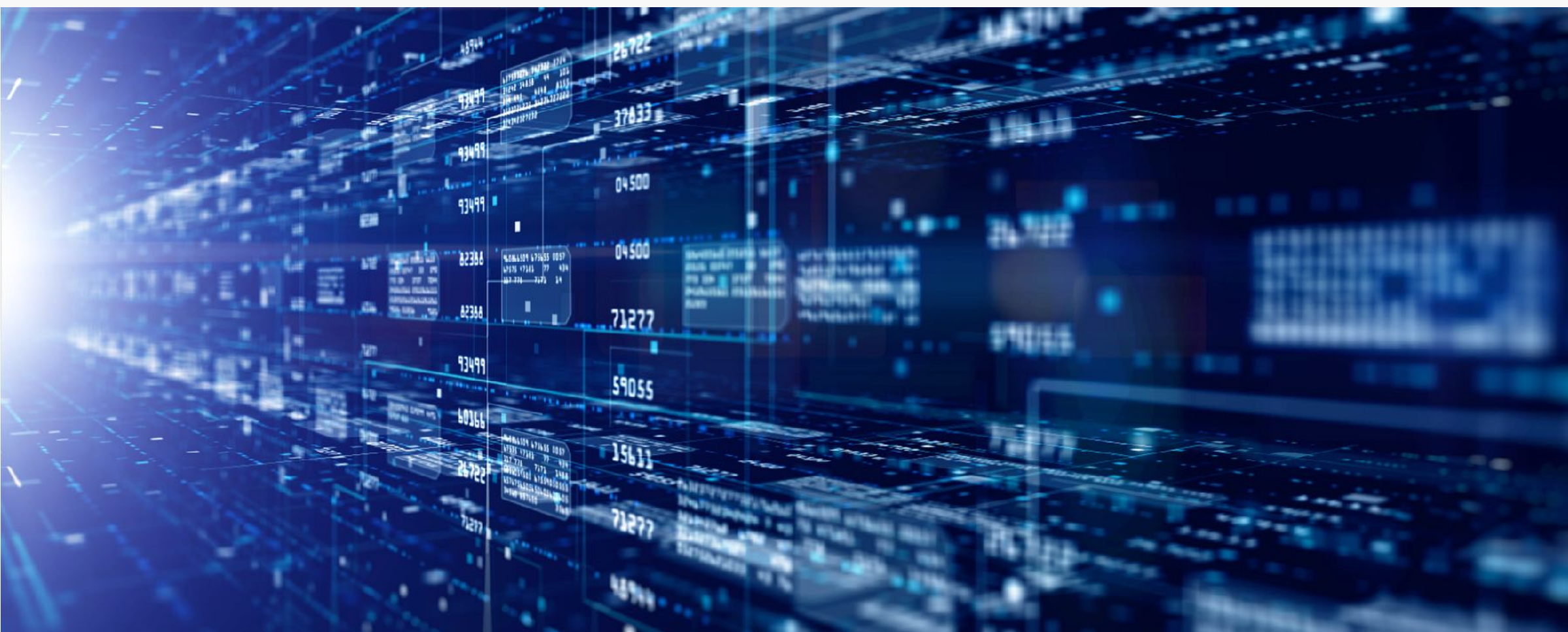
Major challenges for companies when handling market Big Data are technology, data quality, timeliness, accessibility of data and deriving actionable insights. Titan's Software-as-a-Service Supplier Information Management Platform (SIM) offers a solution to access all important supplier information on company level in one place and is fully up- and down-stream integrable and also e.g. supplementary to large system providers in the Source to Contract or Purchase to Pay area.

Titan handles all the technology challenges for you and ensures data quality and timeliness on company level and creates accessibility to valuable supplier information by combining 3rd party data sources, own supplier information enrichments and supplier provided public or private information into searchable and customized company profiles and stands for high-quality managed premium market data.

Through our features and add-ins Discovery, Supplier risk rating, Rate card information, Contract repository and Product & Partner catalogue and Resource vetting (add-in) we provide you with actionable insight to improve your value-chains and increase your ability to meet compliance requirements efficiently.

We can provide Best-in-Class Data by relying on data feeds from the best and common data providers in the market advanced by expert company profile reviews and enrichment, compared with regular reviews and active supplier cooperation by validation of pre-existing information and survey based profile enhancements.

We currently provide 1250 company profiles and manage up to 65 supplier information with aprox. 3000 associated data points per company profile and with focus on Professional Services and IT categories in the DACH region.





## Big Data in Procurement

Titan SIM Platform offers “all-in-one” service to access high-quality premium market data, without worries about the challenges (i.e. Data Quality, Data Accessibility, Data Timeliness, Actionable Insights or Technology) that may arise while leveraging supplier Big Data for procurement.

### Data Accessibility

Titan solves Big Data accessibility challenge by providing:

- easy to use user interface
- structuring and curation of 3rd party data feeds
- printing and export functionalities

### Actionable Insights

Titan brings out actionable insights derived from the fast amount of supplier specific information on our platform, by providing:

- Company compare functionality (within our Discover feature)
- Trustworthy & Easy to use risk ratings
- Market price information, based on public, private or benchmark rates (through our Rate card information feature)

### Data Quality

Titan ensures high data quality on supplier information by:

- Manual data curation by procurement experts
- Data review upon import
- Encouraging suppliers to review existing supplier information for their company

### Data Timeliness

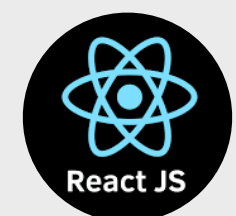
Titan ensures provided supplier timeline information by:

- Data feed monitoring
- Regular data reviews

### Technology

Titan utilizes a state of the art technology stack to ensure availability, security and performance:

- React JS,
- AWS
  - Lambda
  - S3
  - DynamoDB
  - CloudFront
  - Cognito
  - Simple E-Mail Service SES
  - CloudWatch
  - X-Ray



**Titan SIM Platform is completely “Plug-and-Run”, with only a web browser required in order to to access our service.**

## Data Feed Providers & Titan Enrichments

Titan leverages proven data feeds from best and common data providers in the market (e.g. Dun&Bradstreet, BitSight, Refinitiv WorldCheck) on legal entity level, further enriched for business and industry expertise mappings and self-declarations through meaningful surveys by Titan, to provide best-in-class supplier information.

### dun&bradstreet

Titan enriches following Dun&Bradstreet data feeds with relevant information, reviews the data where possible, and identifies legal entities by using the provided D-U-N-S number:

- Dun&Bradstreet CMPLEK v2 Feed, which provides Company Profile, Linkage, and Executives information containing details on the company profile, executive team members, latitude and longitude of company residence and URL
- Dun&Bradstreet CMPTCS feed, which provides Trade Credit Summary to support risk evaluation for trade credit decisions. This data feed is a part of the 360-degree risk view and it requires an additional purchase on the Titan SIM Platform

### BITSIGHT

Titan integrates BitSight Security Ratings, the most widely used data feed ratings solution on the market.

BitSight ratings are the only security ratings that correlate with the risk of data breach. These rating feature company's overall security rating in 20 major risk categories, including:

- Botnet infections
- Spam propagation
- Malware servers
- Open ports
- Patching cadence
- File sharing

The overall BitSight security rating (+ ratings in the 20 categories as well) is a part of the 360-degree risk view and it **requires an additional purchase on the Titan SIM Platform. All rating details can be viewed on the BitSight User Portal upon purchase.**



Titan integrates different "Know You Customer" and "Anti Money Laundering" data feeds via KnowYourCustomer, such as "Refinitiv World-Check", LexisNexis and Basel Institute on Governance, which provide risk information on the following topics:

- Politically Exposed Persons
- Sanction
- State owned entities
- Crimes
- Terrorism
- Enforcement
- Adverse Media
- Country Risk
- Shareholder

This data feed is a part of the 360-degree risk view and it requires an additional purchase on the Titan SIM Platform. Based on this data feed, the Resource Vetting Add-in can be purchased.



Titan enriches external data feeds with relevant information regarding:

- Company Profiles (e.g. company description text, logo, social media links)
- Business, industry and trends expertise mappings, as based on the effective Titan Capability Framework
- Benchmark Rate Cards (to date for Switzerland and Liechtenstein, Germany and Austria) for 67 skill profiles and 5 seniority levels.



## Profile Types

Titan differentiates between 4 different types of supplier profiles. Every profile type increases the depth of supplier information and allows a more holistic view on suppliers.

3 profile types apply to non-self-registered suppliers and will increase basic company information with Titan Premium enrichment. In order to receive a 360-degree risk assessment additional external premium data can be purchased. For self-registered suppliers, a variety of additional information (e.g. self declaration) can be provided via Titan basic surveys, to achieve a more transparent view on suppliers.

Inviting your existing suppliers increases the added value you receive through the Titan SIM Platform, in regard to information depth and quality.

### Profiles types and information depth

	Profile Type	Std. Information Package	Premium Data (extra cost)	Supplier added
non-self-registered	I	 D&B data feed	 Titan basic enrichment	
	II		 Titan premium enrichment	
	III			 Premium data feeds for 360° risk assessment
self-registered	IV	Supplier validated information		 Additional public and private supplier provided information

Additiv increase of available supplier information



## Surveying

In order to support its suppliers to increase their transparency on Self declaration, Sustainability and Delivery Performance topics, Titan offers 3 basic surveys.

Furthermore, Titan surveying features offer the possibility to create customized surveys, to receive benefits, such as purpose fit, corporate governance or regulatory required supplier information.

Titan uses SurveyJS to build surveys and we have learned from Industry leading companies such as Ecovadis, TruSight or Integrity Next to build our targeted and effective Titan Basic Surveys.

### Self Declaration

Questions aim to collect information within the following information categories:

- Employees
- Capital & Repayment capability
- Credit History
- Control Standards
- Standard Terms and Conditions
- Signature authorizations
- Corporate Governance

### Sustainability

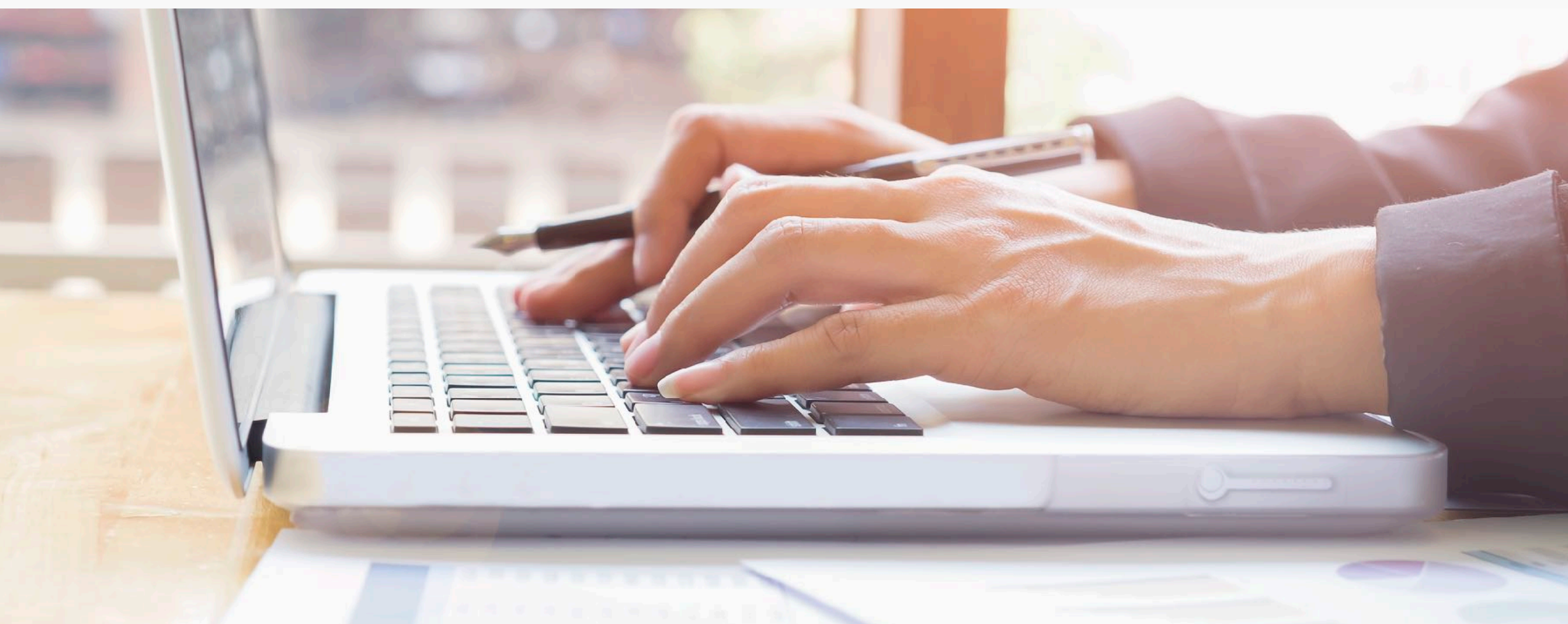
Questions aim to collect information within the following information categories:

- Certificates
- Environmental protection
- Occupational health and safety and social affairs

### Delivery Performance

Questions aim to collect information within the following information categories:

- Market offer  
Supplier contracting
- Quality management organization
- Data protection
- Business continuity management
- Delivery capability





## Premium Company Profiles – Already included as examples!

Titan offers exemplary premium supplier information for 69 companies (most of them have non-self-registered profiles) as a part of the basic subscription package, without the additional charge. For these companies, risk information is provided from (at least one of the data feeds) Dun&Bradstreet, BitSight (Exemplary SnapShot from Fall 2020) or KnowYouCustomer data feeds available.

### Titan partner companies

- Titan Solutions AG
- Amazon Web Services Switzerland GmbH
- Bisnode D&B Schweiz AG
- Bitsight Technologies
- Know Your Customer (Ireland) Ltd.
- On Point SE D.O.O
- Scalerise AG

### Global Outsourcing companies

- Capgemini Suisse SA
- Cognizant Technology Solutions AG
- Dell (Switzerland) GmbH
- DXC Technology Switzerland GmbH
- EPAM Systems (Switzerland) GmbH
- Genpact Onside Services
- HCL Technologies Ltd
- Infosys Consulting AG
- Luxoft Global Operations GmbH
- Synecron Switzerland Systems Integration SA
- Tata Consultancy Services Switzerland Ltd
- Tech Mahindra (Switzerland) SA
- Wipro Limited

### Local German IT companies

- Adesso
- All for One Group
- Arvato Systems
- Bechtle
- CGI Deutschland
- Datagroup

### Big 4 Assurance companies

- Deloitte Consulting AG
- Ernst & Young AG
- KPMG AG
- PricewaterhouseCoopers AG

### Local Austria IT companies

- CSC Consulting AG
- A1 TELEKOM AUSTRIA GROUP
- Kapsch Group
- S&T

### Management Consulting companies

- A.T. Kearney (International) AG
- FTI Consulting
- The Capital Markets Company Sàrl (Capco)
- Horváth AG

### Global IT companies

- Accenture AG
- Atos Information Technology GmbH
- Cisco Systems (Switzerland) GmbH
- Citrix Technologies GmbH
- HP Schweiz GmbH
- IBM Schweiz AG
- Microsoft Schweiz GmbH
- NTT DATA
- Oracle Software (Schweiz) GmbH
- salesforce.com Sàrl
- SAP (Schweiz) AG
- Sopra Steria SE
- T-Systems Schweiz AG
- Google Switzerland GmbH
- Workday Switzerland GmbH
- Pegasystems AG

### Local Swiss IT companies

- ADVIS AG
- AWK Group AG
- CREALOGIX AG
- Elca informatique SA
- Netcetera AG
- Swisscom (Schweiz) AG
- ti&m AG
- UMB AG
- Ergon Informatik AG
- ERNI Schweiz AG
- Die Software Peter Fitzon AG
- ERI Etudes et Réalisation en Informatique bancaire SA
- POLYPOINT AG
- Zühlke AG



# Outlook

## Description

Titan's goal is to continuously develop our country's reach and to expand our supported categories, while increasing the number of accessible supplier profiles. We will drive our innovative approach to expand the SIM Platform in either scope and technology by integrating further data feeds and provide user experience information from profile views and development and enhancement of a Reporting Engine, API for post processing, Analytic Capabilities, ML / AI.

### Areas of scope expansion

- Covered countries
- Supported categories
- Supplier company profiles
- Data Feeds (i.e. ESG-data)
- User experience information

### Technology development areas

- Analytics capabilities
- Machine Learning / AI
- Reporting Engine
- API (post processing)

If you are interested to jointly develop scope expansions, new features or technology integrations, you are very welcome. Procurement is always a team effort.



## Titan SIM Fact sheet

# Exceptional supplier data intelligence – unlocked.

INDIRECT SPEND DACH

A curated platform for indirect procurement, Swiss made.  
Supplier discovery, risk ratings, streamlined interactions – entirely plug-and-run.

## Titan SIM features



### Discovery

Discover the market and instantly get the information you need. Search our continuously growing catalogue of relevant company profiles, based on our effective Titan Capability framework with up to 500 capabilities per company. Our powerful search engine is based on dynamic text-entry, allows a combined boolean keyword search, offers several filter options and includes various sort functionalities and indicators. Titan also offers useful add-ins, such as company comparisons or searches based on user lists.



### Collaborate

Titan enables you to effectively collaborate with your suppliers – with collaboration features deeply integrated. Our «my requests» area allows you to track and trace your interactions. Titan's supplier interaction frontend allows you to send «company invites», «data requests» and «information inquiries» directly to suppliers. Furthermore, you can get easily in touch with us e.g., for additional premium data, or for advisory requests. We are there for you!



### Best-in-class data

Data quality and timeliness is a major challenge for most companies. Titan ensures this on a company level as a service for our customers («all in one»). To date, we already manage more than 65 high-quality supplier information with all the associated details and rely on data feeds from the best and common data providers in the market. Titan stands for high quality and managed premium market data. In addition, we are fully up- and down-stream integrable and also e.g. supplementary to large system providers in the Source to Contract or Purchase to Pay area.



### Supplier risk rating

Supplier risk is a key topic for most of our clients. Titan's new lean rating standard combines data feeds, self declarations, a false-positive review processes and procedures including reporting in one solution. A Titan subscription includes these data for the most important companies in your market. Data for other firms can be easily ordered. Our integrated approach allows a direct deep dive into the risk data via proprietary portals of our data feed providers. We also provide, based on our survey engine, surveys for supplier self-declaration, sustainability and delivery performance. Easy to use and extendable.



### Contract repository

Up-to-date supplier contract data are a key data source for various stakeholders in organizations. Titan's integrated contract repository function allows you not only to store your contracts but also to integrate the individual agreements into your search. Even shared contract folders for suppliers and buyers can be established in a peer-to-peer private space. Titan's contract management feature is equivalent to common standards solutions. In addition, it closes known gaps between document management and contract archiving.



### Rate card information

Get your rate cards organized, compared and benchmarked. Only Titan offers a detailed rate card framework: Currently encompassing 68 standard job profiles with up to 5 seniority levels within 3 main job families – and yet easy to use, including different types of reports. Rate cards are available for three countries (CH, DE, AT). Our framework follows common market standards: The IT experts job family, as defined within the Swiss ICT association framework, or seniority levels in alignment with the standards from the German BDU association.



### Product & partner catalogue

Find the right IT product and implementation partners for your use cases. Titan offers insights into software and service products from providers. Software product groups include all software and solution leaders from the Gartner quadrant. Furthermore, our product groups are integrated into our power search, empowering you to discover the best fit for your upcoming project.

You have a question or want to schedule a demo?



[info@titan-org.com](mailto:info@titan-org.com)



# Appendix

## Company Information Items

The described data feed and Titan Enrichment blocks contain the following data items:



### D&B data feed

#### Company basic information

1. VAT Nr. Registration Nr.,
2. Founding year,
3. Number of employees
4. Website (URL)
5. Industry codes (NACE Standard)
6. D-U-N-S Number
7. Financial & Press hyperlinks
8. Financial information
9. Geo location, address
10. Principles, Auditor
11. Parent companies and country and global ultimate

**Titan  
review**



### Titan basic enrichment

#### Titan completes D&B Data Feed with:

12. Body leasing licence (CH)
13. Logo
14. Tags
15. Company description (EN)
16. Social media hyperlinks



### Titan premium enrichment

#### Titan enriches supplier profile with premium information

17. Further Industry codes
18. Company description in further languages (DE and EN)
19. Industry expertise (up to >70 data items)
20. Trend capabilities (up to >30 data items)
21. Business expertise (up to >200 data items)

#### Further Titan provides

22. Benchmark rate cards (CH/LI, DE, AT) for 67 profiles and 5 seniority levels

**Self registered  
companies validate  
Company Information  
Items 1 to 21**



## Premium data feeds for 360° risk assessment

### Financial & Credit Risk Information based on D&B Data Feed

- 23. Risk Assessment Score
- 24. Paydex Score
- 25. Credit limit recommendation
- 26. Negative events



### Reputational Risk Information (Company & Principals) based on KnowYourCustomer integration

- 27. Politically Exposed Persons (PEP)
- 28. Sanctions
- 29. State Owned Entities (SOE)
- 30. Crimes
- 31. Terrorism
- 32. Enforcement
- 33. Adverse Media
- 34. Country Risk
- 35. Shareholder
- 36. Others



### Cyber Security Risk based on BitSight Ratings (Rating details are available through BitSight User Platform)

- 37. Overall Rating Score
- 38. EVENTS
- 39. Botnet Infections
- 40. SPAM Propagation
- 41. Malware Servers
- 42. Potentially Exploited
- 43. Unsolicited Communications
- 44. DILIGENCE
- 45. SPF Domains
- 46. TLS/SSL Certificates
- 47. TLS/SSL Configurations
- 48. DNSSEC Records
- 49. Application Security
- 50. Patching Cadence
- 51. USER BEHAVIOR
- 52. File Sharing
- 53. Disclosed Credentials
- 54. OTHER
- 55. Data Breaches



## Additional public and private supplier provided information

Self-registered suppliers have are asked to validate all existing profile information where possible and can provide the following additional Company Information Items.

- 56. Company Presentation Video
- 57. Company presentation
- 58. Terms & Conditions
- 59. Contact information
- 60. Account Team Org Chart
- 61. Rate cards
- 62. Preferred suppliers
- 63. Success stories
- 64. Certificates
- 65. Surveys / Self declaration
- 66. Products (incl. corresponding documents)
- 67. Product implementation partners
- 68. Workforce (including corresponding documents)